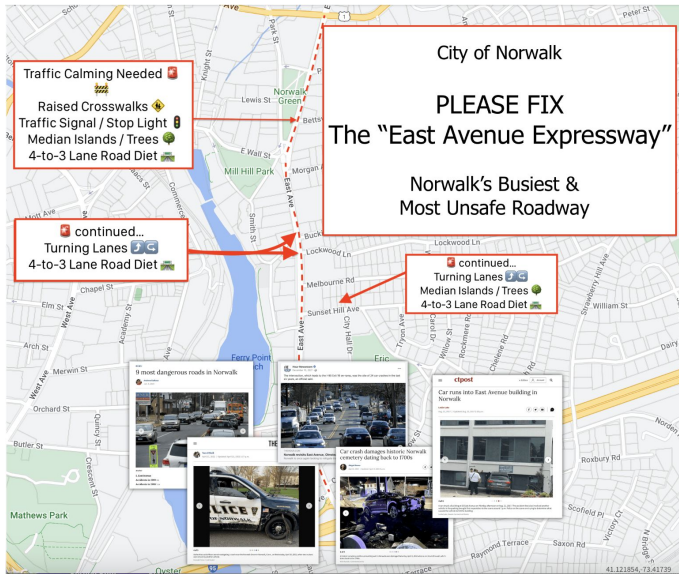


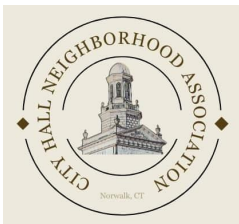
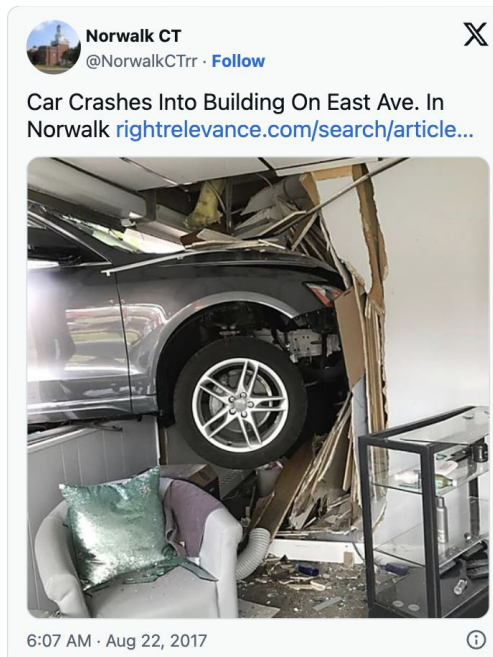
Why is the East Ave Safety Initiative needed? (1 of 2)



Norwalkgreen.com highlights dangers and action plan for East Ave

CHNA & NGA advocated for the East Ave Safety Plan after receiving substantial community concern and support for a solution

Crash data details East Ave's status as one of Norwalk's most dangerous roadways.



Why is the East Ave Safety Initiative needed? (1 of 2)



WHAT'S THE ISSUE?

East Ave is an extremely dangerous, unwalkable traffic funnel. West Ave has 13 traffic lights / crosswalks vs. East Ave w/ only 4. Long, uninterrupted spans draws significant, high-speed "cut through" commuter traffic, divides neighborhoods and destroys quality of life.

UCONN Connecticut Crash Data Repository

CAST Dashboards: Last 3 years

(2023-2025)

90 Crashes / 177 Vehicles / 276 People

The East Avenue Corridor Improvement Study will assess Pedestrian & Vehicular Safety Issues and provide solutions to make the neighborhood safer and more walkable.



First step: Pedestrian safety infrastructure to connect East Ave Neighborhoods & Wall St

WHAT WOULD THIS LOOK LIKE?

The City of Norwalk is conducting the “East Ave Improvement Study” to assess pedestrian safety and will propose improvements (crosswalk, etc.) to areas (e.g., Smith St).

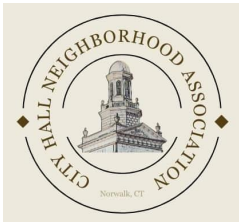
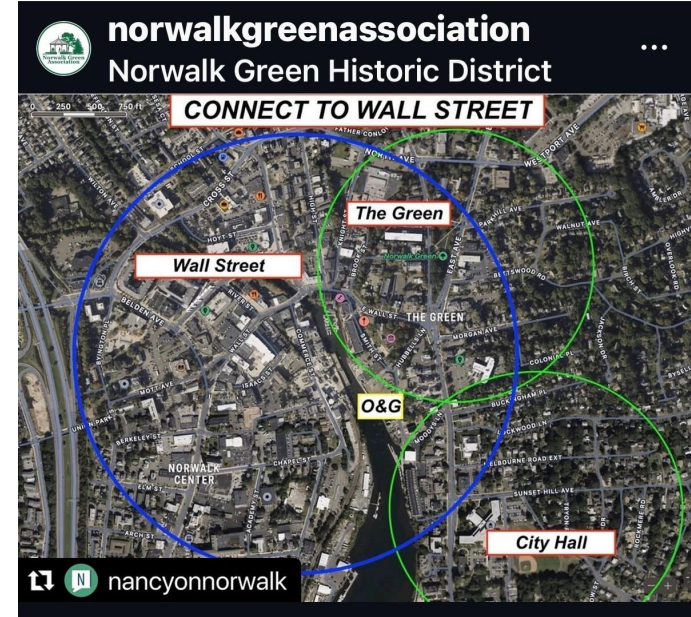
HOW WOULD THIS HELP EAST AVE SAFETY?

East Ave neighborhoods cannot easily or safely access The Green, Harbor Loop Trail or Wall Street. Infrastructure improvements would connect these neighborhoods to Wall St, increasing walkability for residents and allowing them to more easily access the newly revitalized Wall St area!

WHAT ARE THE NEXT STEPS?

Neighborhood associations are going to organize community meetings with City officials.

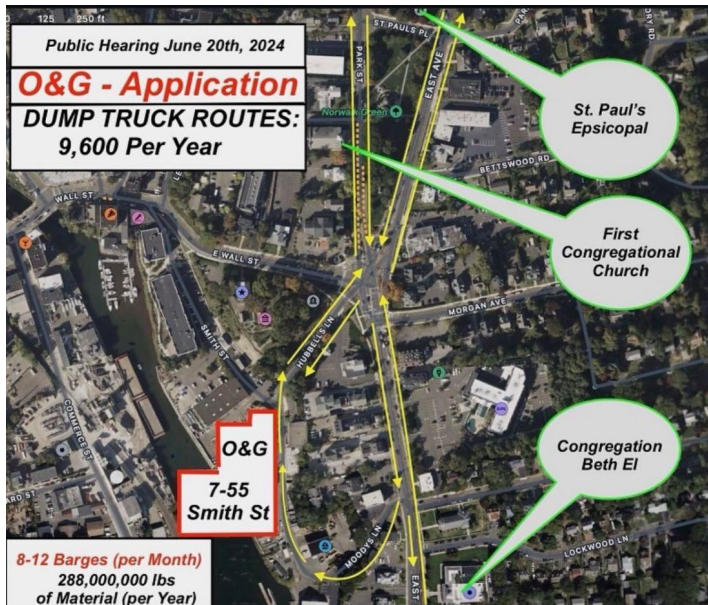
Join us to be involved and have your voice heard!



Fill out the “Join Us” form to be added to our email list



O&G's industrialization would impact East Ave safety



O&G's 9,600 dump truck routes were proposed as 40% Park St, 30% East Ave (N), 30% East Ave (S)



WHAT'S THE ISSUE?

O&G seeks to reopen their the Norwalk River site after decades of inactivity. Result would be significant air, water, noise pollution in a highly residential area. O&G's proposal generated 9.6K dump trucks runs through our neighborhood annually

> 37+ trucks every day (M-F) or 1 tri-axel dump truck run every 13 Mins !

WHAT'S THE STATUS TODAY?

July 2024: O&G withdrew Industrial Application after unprecedented community opposition, organized and led by NGA & CHNA with residents

April 2026: O&G continues to weigh their options, and the neighborhood community has minimal leverage over site's heavy industrial use without organized opposition

O&G Industrial Site (7-55 Smith St.)
Norwalk River

9,600 Dump Trucks?!
Say: No Way!

